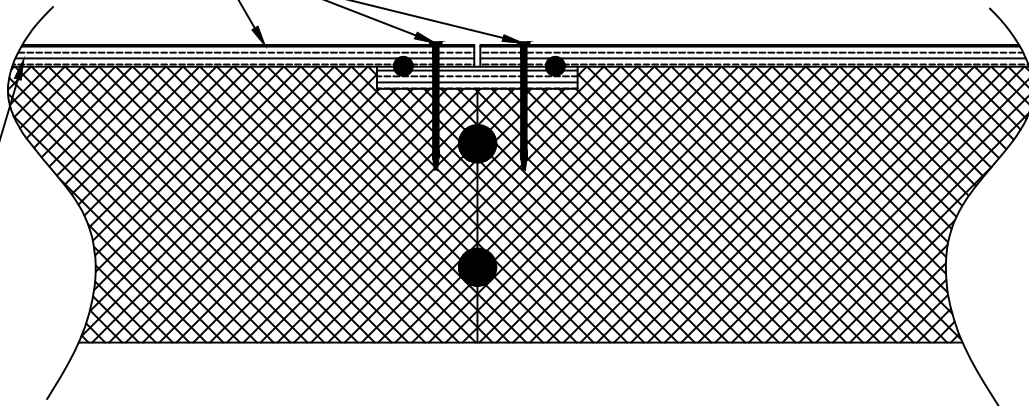


**CONTINUOUS SEALANT
TYPICAL EACH SIDE**

**LAMIT NAILBASE
PANEL**

8d NAILS @ 6" O.C. BOTH SIDES



**7/16" APA RATED O.S.B. SKIN,
TYPICAL
EXPANDED POLYSTYRENE
CORE**

NAILBASE SPLINE CONNECTION

DETAIL NUMBER:

1501

SCALE : NTS

Revised: 3/17/2017

LAMIT INDUSTRIES

**STRUCTURAL INSULATED PANELS
FOR THE BUILDING INDUSTRY**